

Michigan Skillathon Beef 2022

1. What Breed is the photo?
 - a. Charolais
 - b. Hereford
 - c. Red Angus
 - d. Simmental



2. What breed is in the following photo?
 - a. Beefmaster
 - b. Charolais
 - c. Shorthorn
 - d. Brahman



3. Identify this cut of meat.

- a. Rib Roast
- b. Beef for stew
- c. Rack of Ribs
- d. Bottom round steak

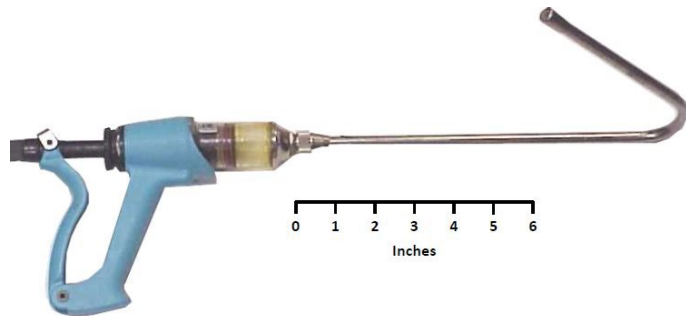


4. Management unit that maintains a breeding herd of cows and produces weaned calves for sale.

- a. Stocker
- b. Feedlot
- c. Seedstock
- d. Cow-calf Operation

Michigan Skillathon Beef 2022

5. This item pictured is called a Drench Gun it is used for what?



- a. Used to chop meat for sausage.
 - b. Used to administer an exact amount of liquid medications for livestock.
 - c. Used to keep water tanks from freezing.
 - d. Used to store semen in until it is ready to be used.
6. An animal that is a product of the crossing of two or more breeds.
- a. Crossbred
 - b. Free Martin
 - c. Purebred
 - d. Calf
7. What is a method of identification?
- a. Picture ID
 - b. Branding
 - c. Cows do not need identification
 - d. Ear notching
8. What is it called when bacteria gets into the hooves of cattle and can cause sore feet?
- a. Black leg
 - b. Keratoconjunctivitis
 - c. Brucellosis
 - d. Foot Rot
9. What is the most important when selecting breeding animals to be used as replacements?
- a. Color & Breed
 - b. Bone & Foot
 - c. Muscle
 - d. Structural & Reproductive Soundness

Michigan Skillathon Beef 2022

10. What medication is used to treat internal parasites?

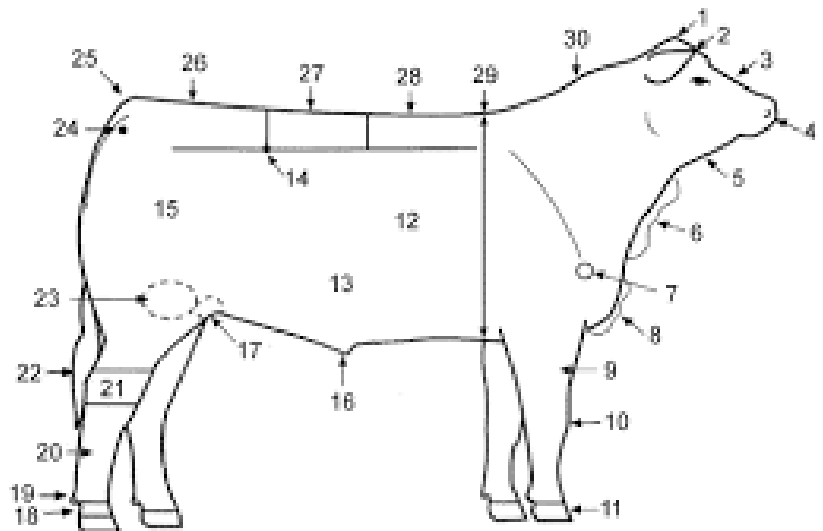
- a. Ivermectin
- b. LA 200
- c. Ace
- d. Essential oils

11. What does BCS stand for?

- a. Body Cow Soundness
- b. Body Condition Score
- c. Below Cow Standard
- d. Body Capacity Score

12. What part of the body is arrow number 29?

- a. Dewlap
- b. Rib
- c. Heart Girth
- d. Stifle Joint



13. Standard weaning age of a calf:

- a. 50 days
- b. 180 days
- c. 205 days
- d. 420 days

14. Proper injection site area on a cow?

- a. Neck area
- b. Stifle
- c. Tail Head
- d. Mouth

Michigan Skillathon Beef 2022

15. Which of the following is a trait of *economic* importance in beef cattle?
- Reproductive Performance
 - Growth Rate
 - Conformation
 - Coat Condition

16.

ALPHA-7/MB-1®

Boehringer Ingelheim Animal Health

Clostridium Chauvoei-Septicum-Novyi-Sordellii-Perfringens Types C & D-Moraxella Bovis Bacterin-Toxoid
BEEF & DAIRY CATTLE

Indications: This product has been shown to be effective for the vaccination of healthy cattle against *Clostridium chauvoei*, *Cl. septicum*, *Cl. novyi*, *Cl. sordellii*, *Cl. perfringens* types C and D, and against pinkeye (infectious bovine keratoconjunctivitis) due to *Moraxella bovis*. This product was licensed prior to the requirement to establish a minimum age for use. The duration of immunity against *M. bovis* is at least 4 months. The duration for the remaining organisms has not been determined. For more information regarding efficacy and safety data, go to productdata.aphis.usda.gov.

Although *Cl. perfringens* type B is not a significant problem in the U.S.A., immunity may be provided against the beta and epsilon toxins elaborated by *Cl. Perfringens* type B. This immunity is derived from the combination of types C (beta) and type D (epsilon) fractions.

Composition: Prepared from chemically inactivated cultures of *Cl. chauvoei*, *Cl. septicum*, *Cl. novyi*, *Cl. sordellii*, *Cl. perfringens* types C and D and *M. bovis* with the special DD-2 adjuvant system to maximize immune response. Gentamicin added as a preservative.

Directions and dosage: Mix well before use. Using aseptic technique, inject a single 2 mL dose subcutaneously prior to the onset of pinkeye season. The presence of maternal antibody is known to interfere with the development of active immunity in cattle and additional boosters will be required in most young animals. Contact your veterinarian or the manufacturer for information on revaccination frequency.

Precautions: Store out of direct sunlight at 35-46°F (2-8°C). Do not freeze. Do not mix with other products. Use entire contents when first opened. Do not vaccinate within 60 days before slaughter. The use of a biological product in lactating dairy cattle can cause reduced milk production. Injection site swelling will often occur that may persist. In case of anaphylactoid reaction, administer epinephrine. This product has not been tested in pregnant animals. In case of human exposure, contact a physician immediately.

Boehringer Ingelheim Animal Health USA Inc., St. Joseph, MO 64506

Phone: 1 (888) 637-4251

VLN/PCN 124/7425.01

| | |
|-----------------------------|-----------|
| Single dose 10 Doses/20 mL | 115301-07 |
| Single dose 50 Doses/100 mL | 115302-06 |

CPN: 1028151.2

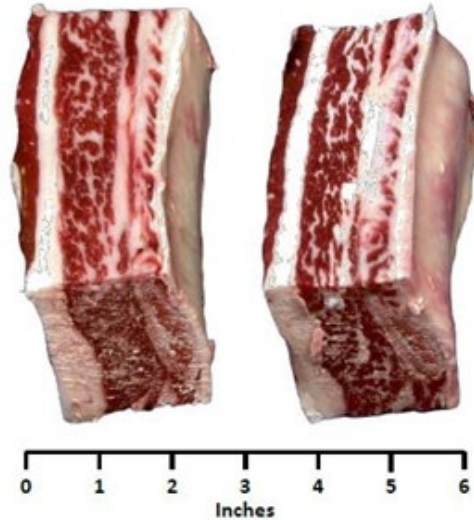
- Which of the following would be incorrect about ALPHA-7/MB-1
- Vaccination of ALPHA-7/MB-1 is required before slaughter.
 - Subcutaneous injection of ALPHA-7?MB-1.
 - Injecting a 2 mL dose.
 - Using the contents of the entire bottle after opening.

Michigan Skillathon Beef 2022

SENIOR QUESTIONS

1. Identify this cut of meat.

- a. Short Ribs
- b. Cross cuts
- c. Tip Roast
- d. Flank Steak



2. Which of the following breeds of cattle was developed by the United States Department of Agriculture?

- a. Brangus
- b. Gelbvieh
- c. Angus
- d. Hereford

3. An inflammation of the udder or mammary gland caused by a bacterial infection is_____.

- a. Lactation
- b. Ketosis
- c. Mastitis
- d. Dystocia

4. What does VAC stand for?

- a. Value Adjacent Cattle
- b. Vaccinate And Cremate
- c. Vascular Artery Condition
- d. Value Added Calf

5. Process of placing a pellet of steroid hormones into the ear of young calves at various time points to accentuate growth potential.

- a. Cattle Identification
- b. Implanting Cattle
- c. Dehorning
- d. Breed Identification

Michigan Skillathon Beef 2022

6. Diarrhea is a common symptom, the primary causes can be thought of broadly in two different groups, nutritional and infectious. True or False
7. What is NOT a common sign of estrus?
- Stands to be mounted
 - Nervous
 - Larger appetite
 - Roughened hair over tail
8. When is a good time to breed during the estrus cycle?
- Beginning to Mid
 - Mid to End
 - End
 - Never
9. Cattle are ruminant animals, there is the abomasum and the rumen, what are the other two compartments called?
- Foregut and Hindgut
 - Fundus & Cardia
 - Reticulum and Omasum
 - Chordata and Soricidae
10. What percent of cow herds in the United States have less than 100 head of cattle?
- 90%
 - 80%
 - 25%
 - 15%
11. Enterprise that produces breeding animals for the commercial segment of the industry. The majority of purebred breeders fall into this category:
- Cow Calf Production
 - Commercial Producers
 - Seedstock Producer
 - Purebred Producers
12. Weaned cattle that are run on grass or fed on high roughage diets. Generally weigh 350 to 550 pounds when started. Expected to gain 250 to 300 pounds during the growing phase.
- Stocker
 - Bull
 - Feeder Cow
 - Feedlot

Michigan Skillathon Beef 2022

13. What state is #1 in the nation for total cattle, beef ranches, and cows?
- Oklahoma
 - Kansas
 - Texas
 - Nebraska
14. True or False: Estrogen produced by females influences the shape which exhibits a rougher, more muscular look with refined head, neck, and shoulders.
- False
15. What is NOT a reason that bulls get castrated?
- Steers are more docile in temperament
 - Inferior bulls are less likely to breed with females
 - Steers can produce more marbling
 - Steers gain weight better

Resources

- <https://4h.ansci.cornell.edu/virtual-resources/>
- [District-3-Livestock-Skillathon-Resources.pdf \(tamu.edu\)](#)
- [Skillathon study guide 2018 - final 7 6 18.pdf \(osu.edu\)](#)
- <https://quizlet.com/subject/skillathon/>
- [Youth Resources | Department of Animal Science \(tennessee.edu\)](#)
- https://greene.osu.edu/sites/greene/files/imce/Program_Pages/4H/Livestock/skill-athon%20study%20guide.pdf

Michigan Skillathon Beef 2022

Answer Key

- 1 C
- 2 B
- 3 C
- 4 D
- 5 B
- 6 A
- 7 B
- 8 D
- 9 D
- 10 A
- 11 B
- 12 C
- 13 C
- 14 A
- 15 B
- 16 A

SENIOR

- 1 A
- 2 A
- 3 C
- 4 D
- 5 B
- 6 TRUE
- 7 C
- 8 B
- 9 C
- 10 A
- 11 C
- 12 A
- 13 C
- 14 FALSE
- 15 D